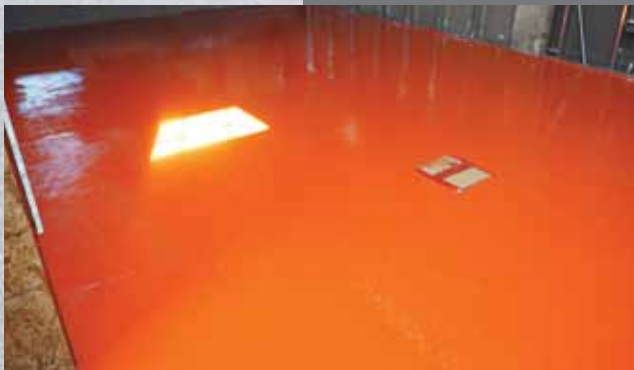




# DEX-O-TEX<sup>®</sup>

Crossfield Products Corp.  
dexotex@cpcmail.net  
(310) 886-9100 West Coast Office  
(908) 245-2800 East Coast Office  
[dex-o-tex.com](http://dex-o-tex.com)



**DEX-O-TEX®**

# TEK-CRETE™

Urethane  
Concrete

**Food & Beverage**

**Breweries**

**Wineries**

**Pharmaceutical**

**Vivarium**

**Pulp & Paper**

**Chemical Processing**





**Tek-Crete technologies are the best in its class of urethane flooring systems and are protecting millions of square feet of concrete in the most abusive environments, like food & beverage processing, chemical processing, and pharmaceutical manufacturing.**

Tek-Crete is the superior seamless alternative to acid brick, quarry tile and other flooring surfaces that tend to crack at mortar joints due to thermal cycling. These dissimilar building materials expand and contract at different rates, causing cracks. Tek-Crete is designed to be stress relieving during thermal expansion and contraction - a major advantage when crack resistance and dimensional stability are important.

Cracks also create a home for unwanted microorganisms. Tek-Crete is anti-microbial so it is superior wherever health and cleanliness are a priority.

Cracks also provide an avenue for chemical and water intrusion. Tek-Crete prevents the migration of water and aggressive chemicals that attack the substrate and eventually may pollute the environment.

Tek-Crete also offers unequalled resistance to impact and corrosion from the most aggressive chemical environments. When daily cleaning with live steam, pressure washing or industrial cleaners are required, you can find no better choice than Tek-Crete.

# World-class Flooring Solutions

Tek-Crete is used in world-class facilities where quality and durability are paramount.

- **Facebook Campus**, Menlo Park, CA  
(Commercial Kitchens)
- **UCLA**, Los Angeles, CA (Institutional)
- **Rose Bowl Stadium**, Pasadena, CA  
(Sports Complex)
- **UCI Medical Center**, Irvine, CA (Healthcare)
- **Space X**, El Segundo, CA (Aerospace)
- **Freedom Tower**, New York, NY  
(Commercial Kitchen)

Tek-Crete is available in a wide variety of aesthetic finishes. Standard one-step systems are the quickest to install and offer the greatest breathability. Topcoated Tek-Crete systems create a decorative look with similar toughness and impact resistance; however, the topcoated systems may be less chemical or heat resistant, depending upon the technology chosen.

*"Being in business for nearly 17 years, I have installed a variety of urethane cements. Dexotex's Tek-Crete line of urethane cements are very user friendly, of the highest quality and have proven the test of time. I feel very comfortable when installing these floors, as Dexotex is a company that you can count on to consistently deliver products of the highest quality, and their technical support is 2nd to none."*

---

**David Genova**  
Vice President, Operations  
**Lennox**



## Tek-Crete Advantages

- Seamless
- Durable, Wear Resistant
- Antimicrobial/Sanitary
- Chemical Resistant
- Heat/Thermal Shock Resistant
- Crack/Delamination Resistant
- Slip Resistant
- Moisture Tolerant
- Rapid Installation
- Self-Priming
- Fast Curing
- Low Odor
- FDA, USDA & CFIA Compliant



Tek-Crete's performance is unmatched. These unique systems are virtually odor-free during installation and cure, which means they can be installed during normal working hours. They are also backed by a leading group of technical service experts with systems know-how second to none.

### Minimal Down Time

Tek-Crete flooring systems cure rapidly, even under cool application conditions. This allows non-broadcast and non-topcoated flooring systems to return to full operation, usually within 12 hours.

### Chemical Resistance

Tek-Crete's proprietary technology provides outstanding protection against chemical attack in a wide range of processing and end-use environments – from food processing and bottling to chemical processing and animal holding. Tek-Crete provides years of superior resistance performance from organic and inorganic acids and bases, solvents, animal waste and most repetitive impact environments.

### High Impact Resistance

Unlike quarry tile and acid brick flooring, commonly known for unsightly and easily damaged mortar joints, Tek-Crete flooring systems absorb direct impact blows without edge spalling by distributing the loads uniformly throughout the system. And, since it is seamless it does not crack, chip or spall.

### Thermal Shock Resistance

Tek-Crete flooring systems maintain their stress relieving elasticity over a wide temperature range up to 350°F. Unlike rigid technologies such as epoxy, vinyl ester, polyester and MMA systems, Tek-Crete won't delaminate due to thermally induced stresses.

### Low Odor

Tek-Crete is virtually odor-free during installation and cure, making it possible to keep the workspace open during application.

### Moisture Tolerant

Tek-Crete can be placed over substrates with moisture vapor emission rates (MVER) in excess of 22.0 lbs/1000 sq/ft/per 24 hr period per ASTM F1869, or an rh in excess of 99% per ASTM F2170. Consult with Crossfield Products Corp. for specific recommendations for substrates which exceed these values.

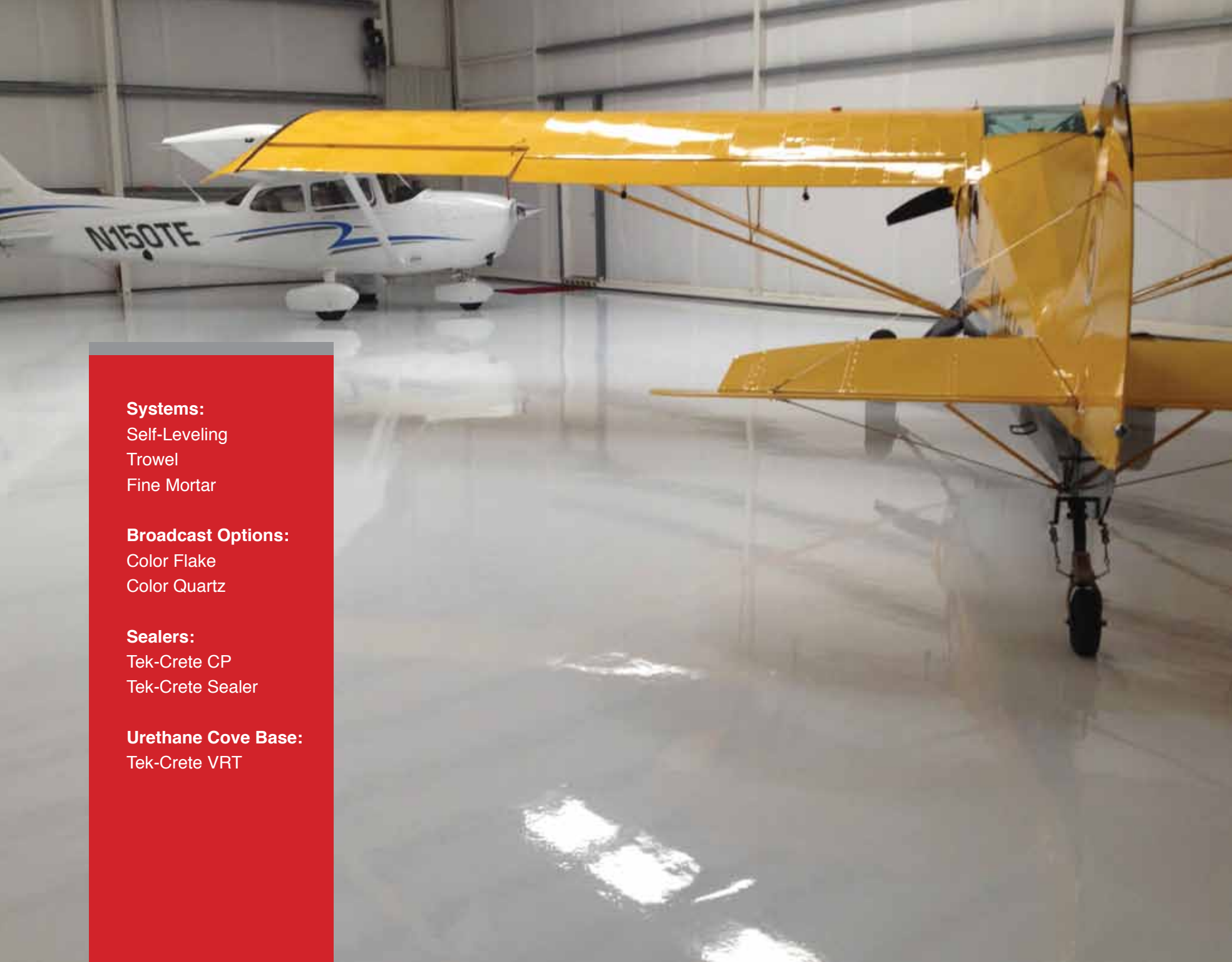
### Skid Inhibition

Tek-Crete's surface profile can be adjusted to provide varying degrees of skid inhibition and ease of cleaning to meet each end-user's specific needs.

### Cleaning

Tek-Crete flooring systems are ideal for severe cleaning techniques, including live steam, hot water, aggressive detergents and disinfectants. Unlike other flooring systems, it is stress relieving, thermal shock resistant, elevated temperature resistant and chemical resistant. Tek-Crete systems are a hybrid polyurethane cementitious mortar chemistry that can be applied with various skid resistant finish textures. The more aggressive the textured profile the more difficult it is to clean. Smoother textures are less skid resistant but are easier to clean. When selecting a Tek-Crete system the surface profile specified for the environment must be considered. In many instances, Tek-Crete's unique formulation allows for hot water or steam cleaning, reducing the need to use caustic and other aggressive cleaning agents and making it more environmentally friendly.





**Systems:**

Self-Leveling  
Trowel  
Fine Mortar

**Broadcast Options:**

Color Flake  
Color Quartz

**Sealers:**

Tek-Crete CP  
Tek-Crete Sealer

**Urethane Cove Base:**

Tek-Crete VRT

# Systems Options

## **Tek-Crete TT - Trowel Grade**

- Quick installation requirements
- Application thicknesses of 1/4 inch (6.35mm) or more
- Areas subject to heavy industrial traffic
- Environments under constant chemical, thermal and mechanical attack
- Temperatures up to 350°F
- Areas requiring hot water or live steamcleaning

## **Tek-Crete SL & SL B - Flowable Grade**

- Quick installation requirements
- Application thicknesses of 3/16 inch (4.8mm) to 1/4 inch (6.35mm) or more
- Areas subject to light to medium industrial traffic
- Environments below -50°F/-46°C to 300°F/149°C
- Areas where surfaces must be smooth and easy to clean
- Areas requiring hot water or live steamcleaning

## **Tek-Crete SL-F (Fine) - Flowable Grade**

- Quick installation requirements
- Application thickness of 1/8 inch
- Areas subject to light industrial traffic
- Temperatures up to 350 °F
- Areas requiring hot water or live steam cleaning
- Application in a smooth, slurry or textured broadcast method to 1/8" finished thickness

## **Tek-Crete VRT - Vertical Trowel Grade**

- Minimum vertical/base application thickness of 3/16 inch (4.8mm) radius
- Vertical base applications
- Steep slopes

## **Tek-Crete Sealer CP**

- Withstands heavy and abusive service
- Polyurethane Resin mixed with Cementitious Powder
- Semi-Gloss appearance
- UV Stable
- Excellent chemical resistance
- Minimal odor during installation and cure
- Color stability
- Moisture tolerant; can be placed over substrates with moisture vapor emission rates (MVER) in excess of 22 lbs/1000 sq/ft/per 24 hr period per ASTM F1869, or an rh in excess of 99% per ASTM F2170. Consult with Crossfield Products Corp. for specific recommendations for substrate that exceed these values
- Skid-Resistant - An array of skid-resistant surface textures available

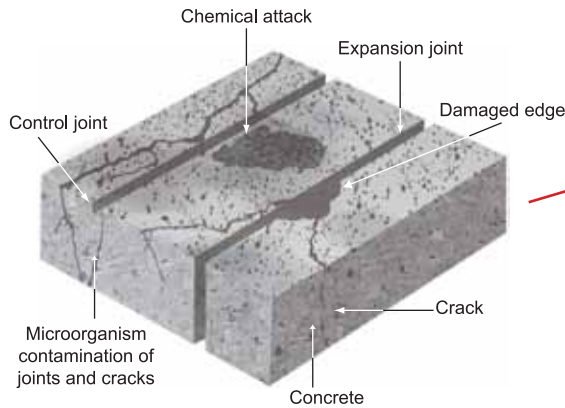
## **Tek-Crete SLCF - Color Flake System**

- Application thicknesses of 1/4 inch (6.35mm) or more
- Environments requiring skid resistance
- Breweries even when wet
- Areas subject to wet processing
- Areas where aesthetics are important
- Wineries
- Areas subject to temperature ranges of up to 220°F
- Areas subject to chemical attack
- Pharmaceutical
- Areas where cleanliness and hygiene are important

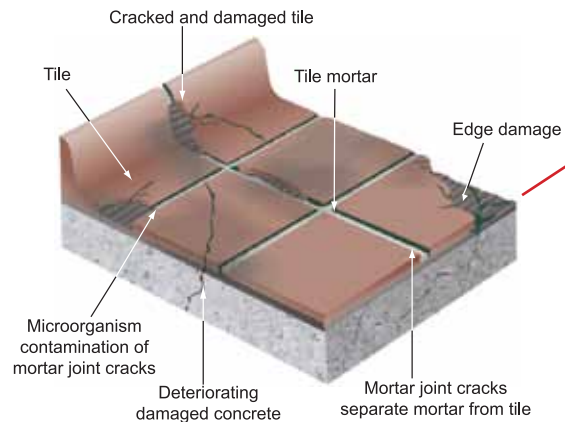
## **Tek-Crete SLB & SLCQ - Broadcast Grades**

- Application thicknesses of 1/4 inch
- Chemical Processing (6.35mm) or more
- Environments requiring skid resistance even when wet
- Areas subject to wet processing
- Areas where aesthetics are important
- Areas subject to temperature ranges of up to 220 °F
- Areas subject to chemical attack
- Areas where cleanliness and hygiene are important



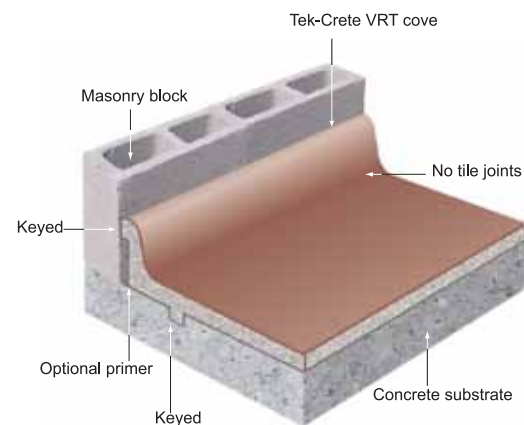


If your concrete looks like this, you already know you have problems. Tek-Crete is the solution! Tek-Crete is the ideal surfacing for new or distressed concrete. After proper surface preparation, the Tek-Crete is installed directly over the spalls and contraction/relief joints. The expansion and isolation joints are honored, which means they are left to move as designed.



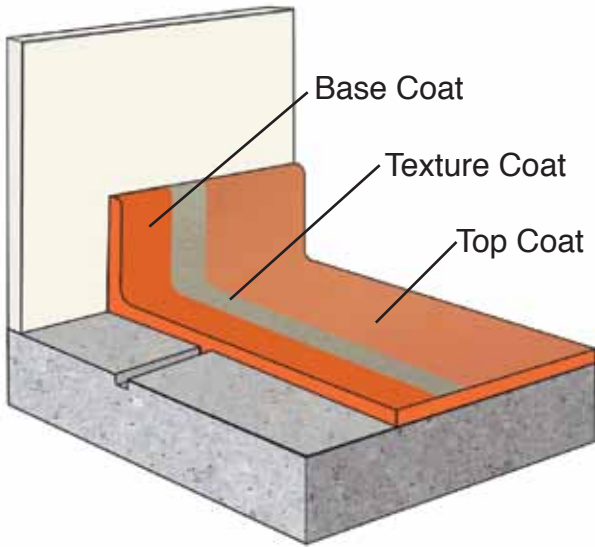
If your quarry tile or acid brick looks like this, you know you have problems. If you look closely at the mortar joints, you will see separation, especially if you clean the surface with hot water or steam. The cracks are induced by the different coefficient of thermal expansion between the mortar and brick/ tile. To avoid the problems with tile and other seamed systems, specify Tek-Crete, your best choice.

Tek-Crete Topcoat options include standard epoxy, novolac epoxy or polyurethane/polyaspartic formulations. Reference Dex-O-Tex® Tek-Crete Selector Guide and associated product data sheets for additional information on appropriate product selections.



Tek-Crete system options include trowelable, screed applied and screed broadcast (solid aggregate, colored quartz aggregate and flake) formulations.

Optional primer recommended over substrates under high outgassing conditions.



## System Options

	Tek-Crete TT	Tek-Crete SL	Tek-Crete SL-F	Tek-Crete SLB	Tek-Crete SLCQ	Tek-Crete SLCF
Description / Type	Trowel	Slurry	Self Leveling	Screed Broadcast (Solid Aggregate)	Screed Broadcast (Colored Quartz)	Screed Broadcast (Colored Flake)
Broadcast, Medium				Aluminum Oxide or Quartz	Colored Quartz	Colored Flake
Top Coat Options						
Tek-Crete Sealer	Optional	Optional	Optional	NA	NA	NA
Standard Epoxy	Optional	Optional	Optional	Good	Good	Good
Novolac Epoxy	Optional	Optional	Optional	Better	Better	Better
Polyurethane/Polyaspartic	Optional	Optional	Optional	Best	Best	Best

## Application Recommendations

	Tek-Crete TT	Tek-Crete SL	Tek-Crete SL-F	Tek-Crete SLB	Tek-Crete SLCQ	Tek-Crete SLCF
Application Environments	Trowel	Screed	Screed	Screed Broadcast (Solid Aggregate)	Screed Broadcast (Colored Quartz)	Screed Broadcast (Colored Flake)
Animal Housing & Health	S	S	S	P	P	P
Battery Charging Areas	P	P	P	P	CC	CC
Beverage, Spirits & Distilleries	P	S	S	S	S	S
Cage Wash	P	P	P	S	CC	CC
Chemical Processing/Refineries	P	P	P	S	CC	CC
Containment Areas	P	S	S	P	CC	CC
Dairies, Milk Processing	P	P	P	P	CC	CC
Drum & Barrel Handling	P	S	CC	S	CC	CC
Food Processing	P	P	P	S	S	S
Freezers & Coolers	P	S	S	S	CC	CC
Kitchens — Commercial, Institutional & Industrial	S	P	P	P	P	P
Laboratories	S	S	S	P	P	P
Manufacturing, Light Duty	S	S	S	P	P	P
Manufacturing, Medium Duty	P	S	S	P	S	CC
Manufacturing, Heavy Duty	P	S	CC	S	CC	CC
Meat, Fish, Poultry Packing	P	P	P	P	CC	CC
Plating, Pickling & Etching	P	S	CC	S	CC	CC
Printing (Inks & Dyes)	P	P	P	S	CC	CC
Pulp & Paper Processing	P	P	S	P	CC	CC
Waste Handling & Transfer	P	P	S	P	CC	CC
Wineries	P	S	S	S	S	S

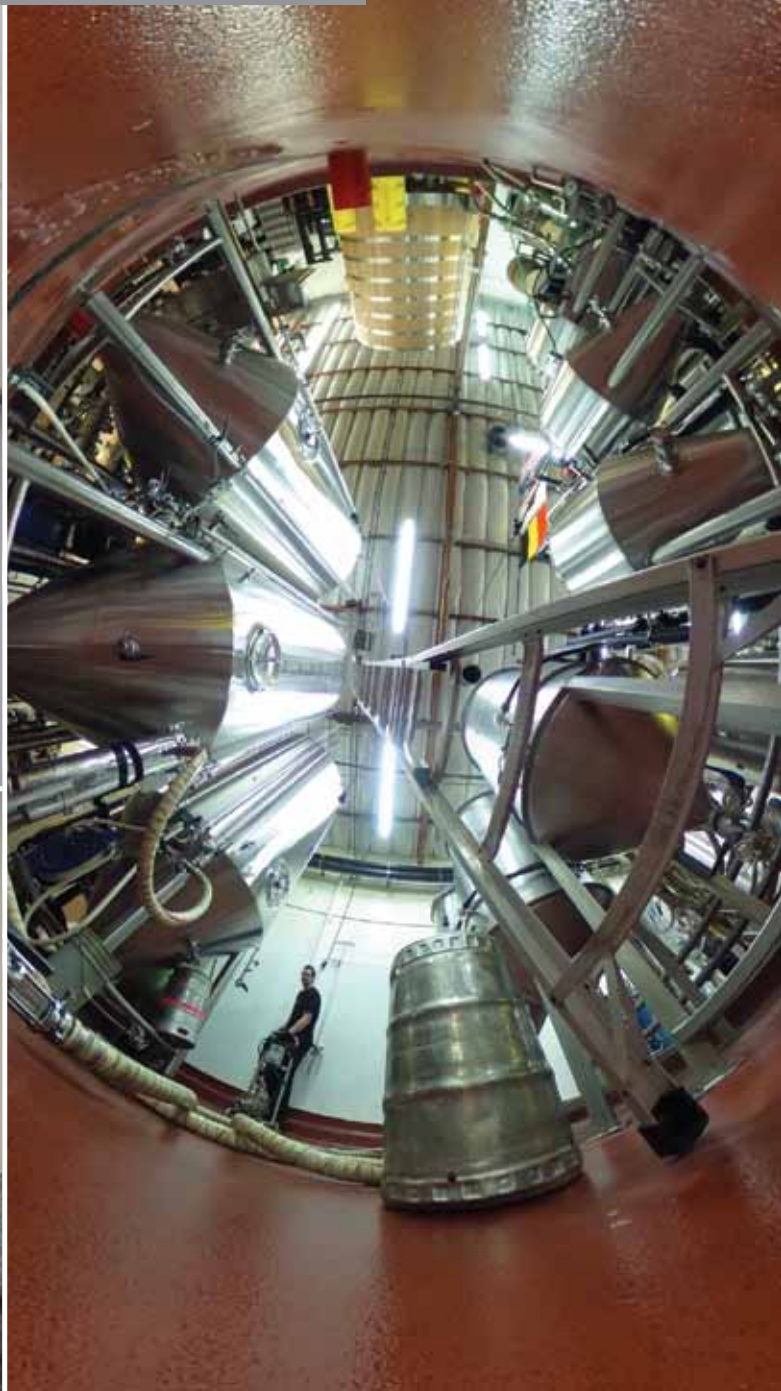
Reference Key P - Primary Recommendation, S - Secondary Recommendation, CC - Consult Crossfield

### Factory Trained Installers

The most advanced network of Factory Trained Installers who specialize in the installation of **Tek-Crete** systems are on your side. This international group of installers, in conjunction with professional architects and engineers, ensure that **Tek-Crete** systems are specified and installed right the first time.

These installation experts are committed to quality and owner satisfaction. For further systems and application information, contact your local Crossfield Products Corp. representative today.

# Scientifically Superior™ and Performance Proven Construction Products





Urethane  
Concrete

**DEX-O-TEX**

**TEK-CRETE™**



# DEX-O-TEX®

Contact us today for a free  
facility evaluation and recommendation.

**Crossfield Products Corp.**

[dexotex@cpcmail.net](mailto:dexotex@cpcmail.net)

(310) 886-9100 West Coast Office

(908) 245-2800 East Coast Office

