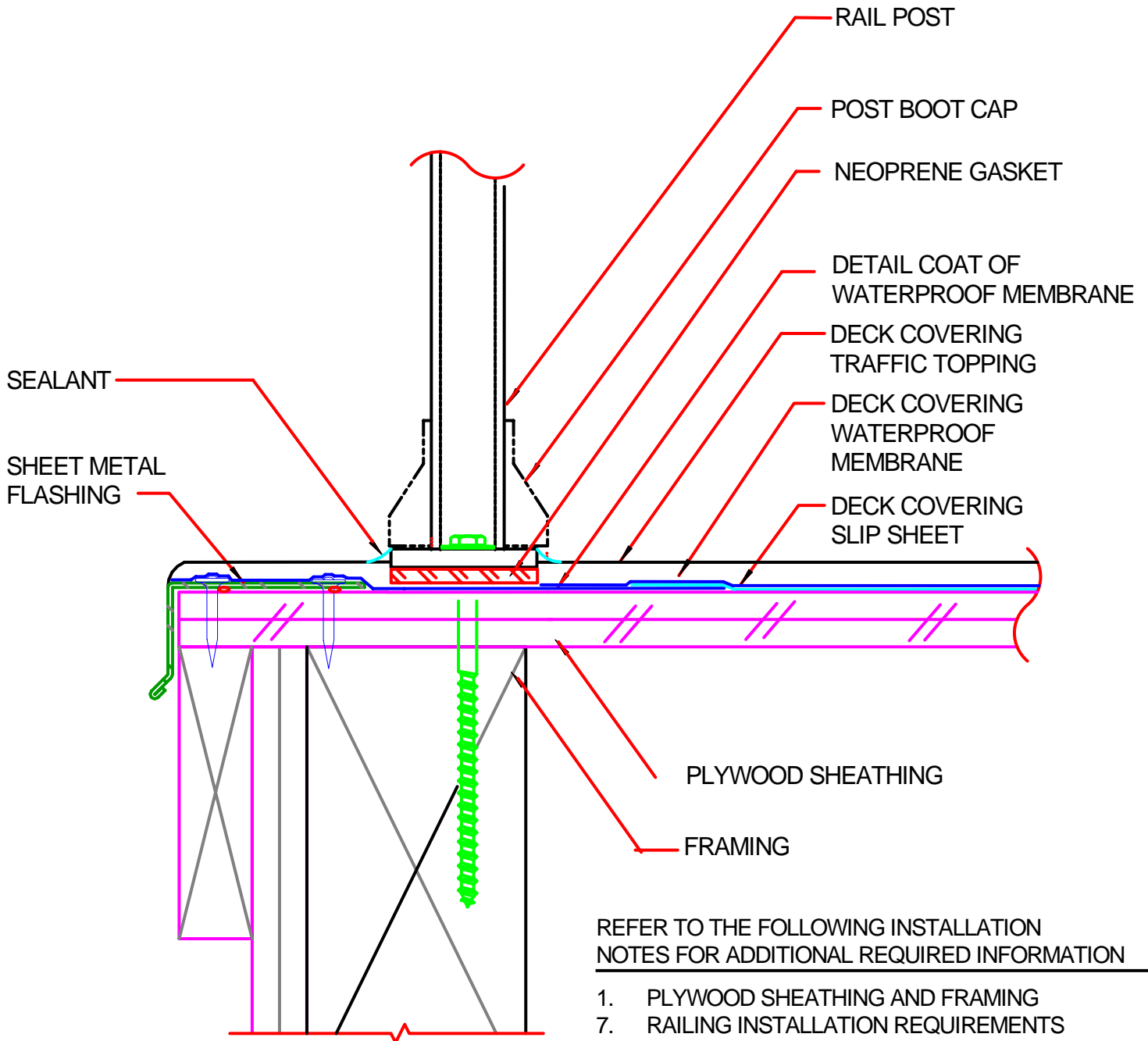


**WEATHERWEAR:
SLIP SHEET DECK COVERING
RAIL POST**



Railing Mounting Plate Detail - W5C



Crossfield Products Corp.
Corporate Offices
West Coast Office
3000 Harcourt Street
Rancho Dominguez, CA 90221
310-886-9100
310-886-9119 fax

East Coast Office
140 Valley Road
Roselle Park, NJ 07204
908-245-2800
908-245-0659 fax