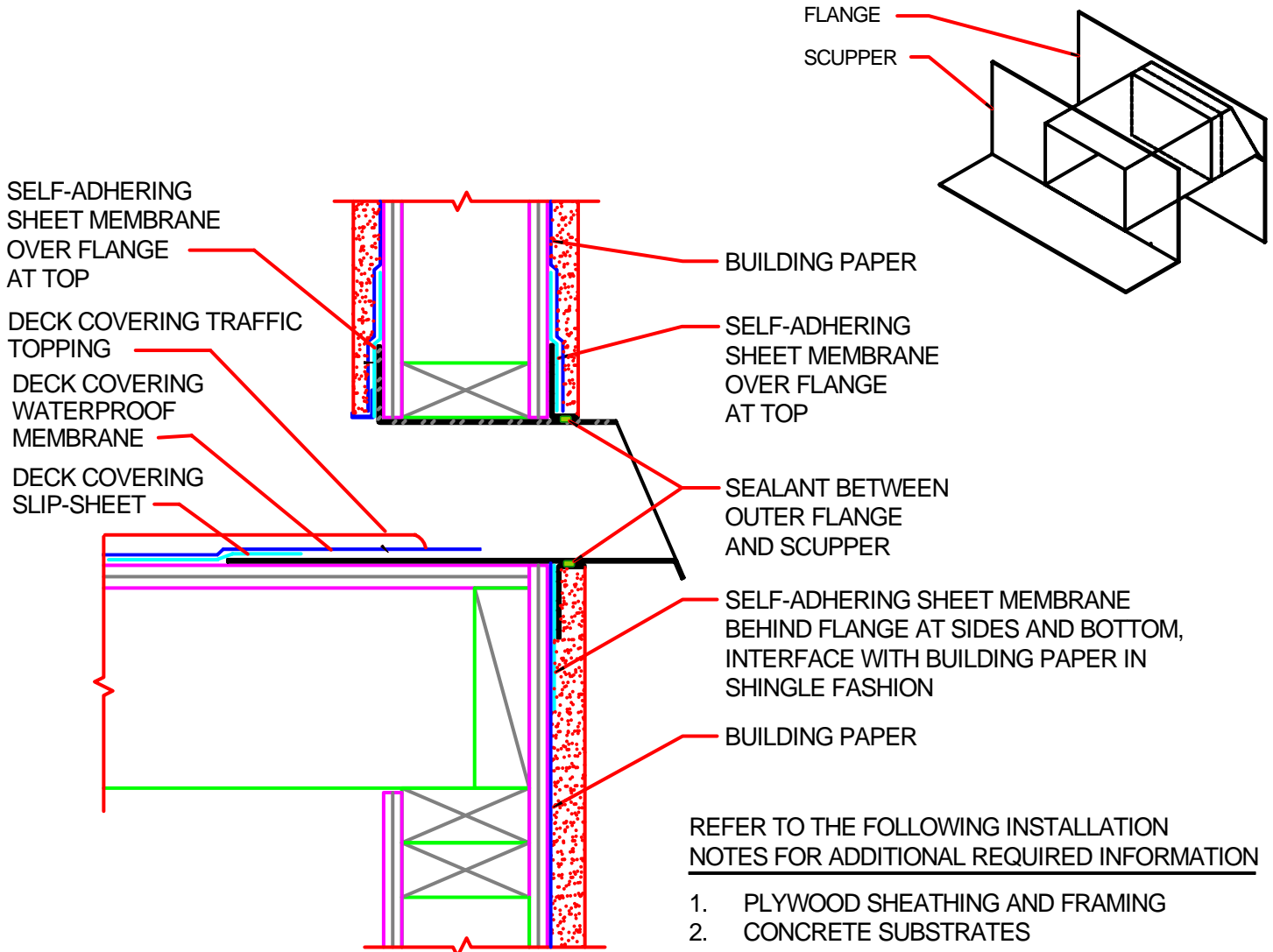


# WEATHERWEAR: SCUPPER INSTALLATION



REFER TO THE FOLLOWING INSTALLATION NOTES FOR ADDITIONAL REQUIRED INFORMATION

1. PLYWOOD SHEATHING AND FRAMING
2. CONCRETE SUBSTRATES
- 3A. SHEET METAL INSTALLATION - WOOD
- 3B. SHEET METAL INSTALLATION - CONCRETE

## Scupper (2 of 2) - W4B



Crossfield Products Corp.  
 Corporate Offices  
 West Coast Office  
 3000 Harcourt Street  
 Rancho Dominguez, CA 90221  
 310-886-9100  
 310-886-9119 fax

East Coast Office  
 140 Valley Road  
 Roselle Park, NJ 07204  
 908-245-2800  
 908-245-0659 fax