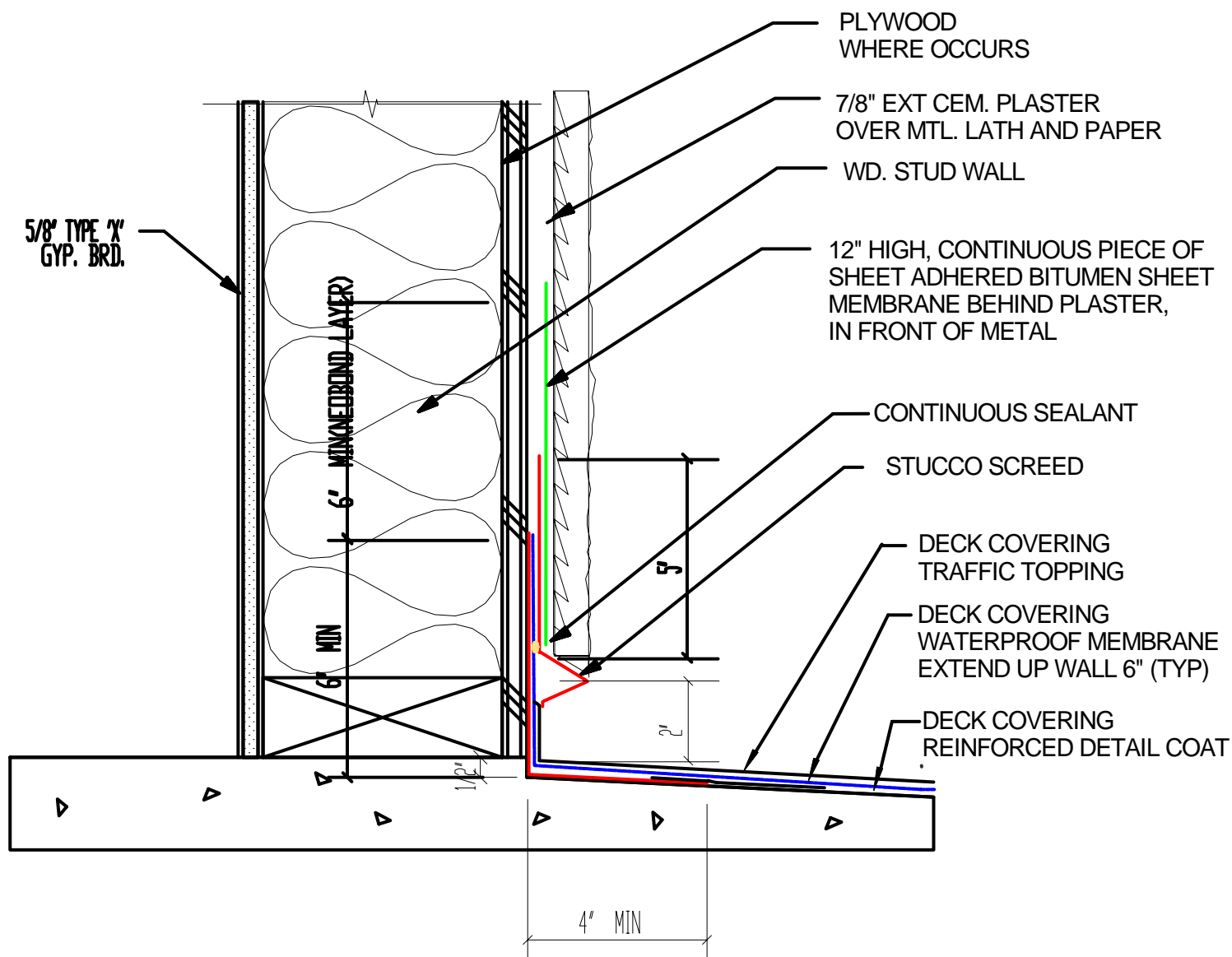


## WEATHERWEAR: ELASTOMERIC DECK COVERING PERIMETER FLASHING



### Deck To Wall 2 Piece Flashing Detail - W3C



Crossfield Products Corp.  
Corporate Offices  
West Coast Office  
3000 Harcourt Street  
Rancho Dominguez, CA 90221  
310-886-9100  
310-886-9119 fax

East Coast Office  
140 Valley Road  
Roselle Park, NJ 07204  
908-245-2800  
908-245-0659 fax